

GOVERNMENT AND HOMELAND SECURITY LIGHTING CAPABILITIES GUIDE



History of Holophane2

Commitment to Quality.....3

Homeland Security.....4

Large Area Lighting5

Parking and Roadway Lighting...6

Streetscape and Site Lighting . . 7

Energy Solutions.....8, 9

Fluorescent Products9

SiteLink.....10

We Can Help You.....11

Many Services We Provide11

Contact Information.....12

History

Holophane

Holophane is a vertically integrated international manufacturer and marketer of premium quality, highly engineered, lighting systems targeted to the industrial, commercial and outdoor markets.

For more than a century, Holophane has been the leading innovator in lighting technologies. Holophane advancements in optical control through the use of prismatic refractor and reflector technology have established industry standards for luminaire efficiency. Holophane's commitment to quality lighting applications has set design guidelines for the industry. This commitment is evident in the leading role Holophane played in organizing the Illuminating Engineering Society. The Society was housed at Holophane's New York City offices beginning in 1906. To this day, the lighting industry is served by this technical society. Through unparalleled research and development Holophane's outstanding staff of research engineers continues to lead the industry by inventing innovative lighting solutions for a wide range of lighting applications.

Holophane firsts include:

- High bay lighting
- Hazardous lighting
- Naval signal lens
- Cobra head
- Wallpack unit
- High mast lowering devices
- P.O.L.A.R.™ Technology
- ISD SuperGlass® Technology

Our history includes contributions beyond the lighting industry. During World War II, Holophane assumed a particularly proactive stance in the wartime production effort. Our development of the state-of-the-art naval signal lamp lens was significant enough to earn the company an Army-Navy "E" Award for Excellence in War Production.



Holophane headquarters, Granville, Ohio



Early Holophane streetscapes, circa 1918



Army-Navy "E" award for excellence in war production



All Holophane products go through a sophisticated battery of tests

Commitment to Quality

Throughout our history, Holophane has provided indoor and outdoor lighting solutions for all branches of government – federal, state and local. We remain committed to providing the highest degree of performance at the best value to our government customers.

With our manufacturing facilities headquartered in Newark, Ohio, Holophane's commitment to quality is achieved by designing products that provide superior:

- Photometric performance
- Energy efficiency
- Long life
- Ease of installation and maintenance
- Value

To do this we:

- Employ the industry's top optical designers to develop state-of-the-art optical systems
- Manufacture electrical components to achieve the highest level of reliability and energy efficiency
- Mold our own glass to have absolute control of optical quality
- Extensively test products to assure compliance with design specifications
- Use materials and manufacturing processes designed to optimize life and performance

The Ohio Holophane plant houses the state-of-the-art, highly efficient gas/oxygen furnace capable of servicing all of the company's glass requirements. Holophane's investment in technology and tooling makes it a leader in the formation of prismatic glass for lighting applications. The Endural® borosilicate glass used possesses excellent light transmittance, mold-ability, a low coefficient of expansion and high performance.

Holophane has the resources, expertise and flexibility to meet all of your lighting needs. We offer not only our standard product line but custom luminaires and poles for indoor and outdoor applications. You can expect expert technical support, quality, reliability, and superior performance, all at the lowest total operating cost.



Homeland Security

When it comes to Homeland Security and the physical protection of critical infrastructures and key assets, Holophane stands ready to help.

Holophane is known for superior outdoor high mast, large area lighting products and high performance indoor, energy efficient products. For decades we have been supplying security lighting to the US Military, Army Corp of Engineers, correctional facilities, transportation departments, and many other government agencies. When security lighting is required for public safety, physical security, or anti-terrorism force protection measures, Holophane has reliable, cost-effective solutions you can count on.



AIRPORTS



HIGHWAYS & INTERCHANGES



GOVERNMENT FACILITIES



NATIONAL TREASURES



WATER & WASTEWATER TREATMENT



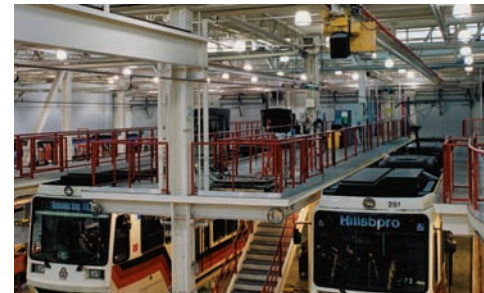
NATIONAL MONUMENTS



AMERICAN PASTIMES



MARINE PORTS



RAIL & BUS



SCHOOLS & UNIVERSITIES



BRIDGES & DAMS



CHEMICAL & POWER PLANTS

Large Area Lighting

Holophane lighting systems can significantly improve visibility for surveillance and intruder detection.

Holophane is well known for the HMS® (High Mast Systems) Lighting with Surveillance Camera System...an unprecedented solution for your lighting, surveillance, and security requirements. This system, which is customized to meet your application needs, combines premium products from Holophane and Ultrak®, a leading manufacturer of integrated access control and camera security solutions.

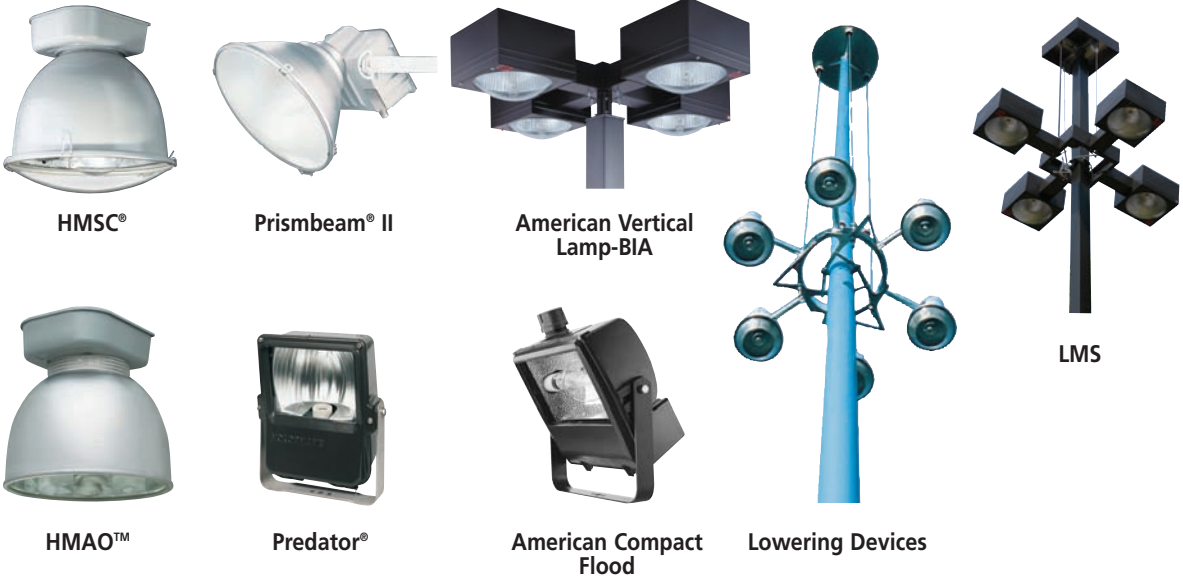
Features include:

- Highly efficient lighting enhances visibility and identification
- Mounting height of the high mast pole provides much greater coverage than a low mount camera, which is typically a 50 foot maximum height. Mounting height options range from 50' - 200'
- Customized lowering device provides simplified maintenance and easy access for both the camera and the luminaires
- Fewer poles for increased safety
- Ground level maintenance
- Reduced installation and operating costs



High Mast System
HMS® luminaires on lowering device with surveillance camera

- HIGHWAYS
- INTERCHANGES
- PARKING AREAS
- AIRPORTS
- SEAPORTS
- STORAGE FACILITIES
- PRISON YARDS
- RAIL YARDS
- TREATMENT PLANTS
- PETROCHEMICAL OPERATIONS
- SECURITY LIGHTING
- ATHLETIC FIELDS
- UNIVERSITIES
- GOVERNMENT FACILITIES
- MILITARY
- STATE AND LOCAL MUNICIPALITIES
- UTILITIES



Parking and Roadway Lighting

Holophane Parking and Roadway luminaires combine architectural style with advanced optical systems to provide superior lighting solutions for a wide variety of applications.



Mongoose®

The Mongoose roadway and area lighting luminaire offers paramount versatility of applications with advanced optical systems and an aesthetically pleasing design. The ability to configure the Mongoose optics, tilt, and mounting method to meet specific applications enables it to be used in diverse applications ranging from interstates to parking lots. With fourteen optical configurations, including wide roadway, narrow roadway, medium roadway, forward throw, wide flood, narrow flood, and square distributions and tilts ranging from 0° to 45°, it provides unparalleled solutions for a multitude of lighting requirements. The Mongoose has full cutoff through semi-cutoff distributions providing additional flexibility.



PoleStar® II

- European styling
- Open and enclosed optics
- Choice of architectural shades



Pechina™

The Pechina, our contemporary roadway and large area luminaire, combines fresh distinctive European styling with Holophane's reputation for superior optics, photometric performance, ease of maintenance, quality and full range of IES optical choices. Its tool-less entry makes the Pechina not only an attractive choice for state and local municipalities, utilities and DOT's, but all major commercial applications as well.



- HIGHWAYS
- INTERCHANGES
- GATES
- PERIMETER
- PARKING AREAS
- AIRPORTS
- SEAPORTS
- STORAGE FACILITIES
- PRISON YARDS
- RAIL YARDS
- TREATMENT PLANTS
- PETROCHEMICAL OPERATIONS
- SECURITY LIGHTING
- TUNNELS



Somerset®



MirroStar®



Vector®



Durastar™ Series 30



Roadway Series 115 Cutoff



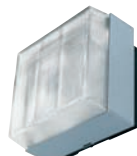
Corvus™ Large



Parkpak®



Wallpack® IV



Module® 600



Remote Operations Asset Management

ROAM is an innovative asset management system designed to remotely monitor and control outdoor lighting fixtures. ROAM pairs intelligent photo controls with proven wireless communication technology to establish connectivity between lighting system operators and the assets they manage.



Conventionally managed lighting systems rely on customers and patrol crews to identify fixture outages. ROAM continuously monitors system operation; identifying and reporting outages as they occur.

In addition, ROAM provides the customer the option of controlling fixtures from a central location via a secure web portal.

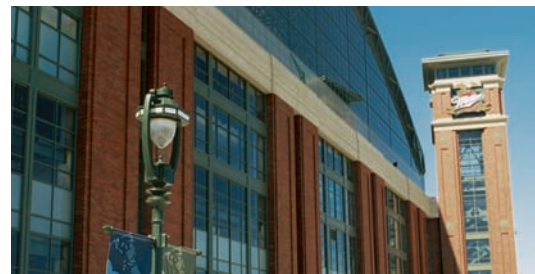
Streetscape and Site Lighting

Holophane is the innovation leader in providing high performance decorative lighting products for outdoor applications.

Holophane has a wide variety of luminaires and contemporary lighting, as well as the ability to develop custom products. Whether you are doing streetscape, plaza or pedestrian walkways, Holophane has the right luminaires, poles and accessories to ensure excellent life, performance, ease of maintenance, and superior aesthetics and appearance. We offer:

- Distinctive styling
- Choice of optics, including Lunar Optics® (IESNA Cutoff)
- Ease of maintenance
- Performance
- Reliability

In all settings, Holophane strives to design, develop, and manufacture lighting systems that create a warm, pleasant, and exceptionally well-illuminated environment promoting safety, security, and commerce.



- CITY STREETS
- PARKS
- CAMPUSES
- ADMINISTRATION BUILDINGS
- COURTHOUSES
- PARKING LOTS
- WALKWAYS
- MUNICIPALITIES
- UTILITIES
- MILITARY HOUSING
- MODERNIZATION



GranVille®



Washington PostLite®



Milwaukee Harp



RSL-350®



Esplanade®



GlasWerks® II



Arlington®



Valiant™

Energy Solutions

Holophane can help you achieve your energy conservation goals by offering unique products and services, to make your energy upgrade projects a success.

The Elite Series

Holophane's Elite Series, the next generation of a proven and reliable electronic HID ballast technology, gives you the best possible solution to meet your lighting requirements. Coupled with Holophane's ISD SuperGlass® technology there is no competition when it comes to pure performance in terms of light quality, light distribution and energy savings.



Prismalume® & Prismpack® V

Prismalume and Prismpack V high bay fixtures using pulse start metal halide lamps and ballasts are designed for use in numerous applications to meet today's energy efficient requirements. Powered by a highly efficient magnetic ballast, and superior ISD SuperGlass® optics, this product is positioned to put light where you want it and provides you with energy savings during a time of skyrocketing energy costs.



ISHB – Individually Sensored High Bay

As part of our standard offering on several HID high bays, Holophane's Individually Sensored High Bay (ISHB) option has its own sensor to maximize both control and energy savings. ISHB detects motion within the sensor range and sends a signal to the luminaire to switch from low light output to normal light output when occupancy is detected. When there is no activity, the control reverts to 50% input power to lower energy consumption. Simply put, ISHB is designed to monitor your lighting system, luminaire by luminaire, and only put energy use where it is needed when it is needed.



Illumibay®

Conventional high bay luminaires use a ballast housing focused on function only with no consideration given to aesthetics. However Holophane's Illumibay Series introduces an attractive new look to high bay lighting. The Illumibay incorporates the most efficient optical design on the market today (Holophane's patented ISD SuperGlass®) with a ballast housing having elegant, contemporary styling. This soft visual transition reduces the contrast and subsequent perception of glare while transforming the fixture from a means of providing light to an actual element of design. Now available with multiple compact fluorescent lamps, this fixture intrinsically integrates bi-level control requirements for EPAAct requirements.



EPAAct 2005

ENERGY POLICY ACT OF 2005

The Energy Policy Act of 2005 (EPAAct 2005), has enacted an energy-efficient commercial building tax deduction with favorable incentives for the taxpayer, subject to a cap.

Since its founding in 1898, Holophane has constantly worked at the technological frontiers of illuminating engineering, seeking new and better solutions to the challenge of producing energy efficient, high performance lighting systems. Holophane's history and value proposition is to offer our customers the lowest total cost of ownership through unique and innovative products.

The commercial building tax deduction is yet another incentive to help you get there.

Customer Benefits:

- Improved cash flow
- Reduced payback period on investment
- Lower annual operating expenses
- Reduced energy consumption
- Increased productivity potential
- Improved lighting quality

MEMBER OF

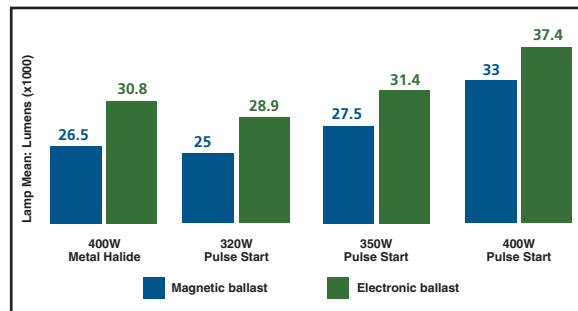
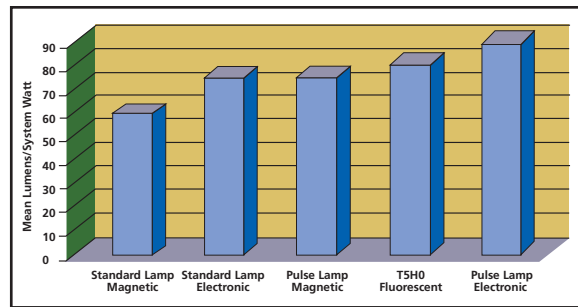


Energy Solutions

Electronic HID Ballast

Electronic ballast technology improves lighting system efficacy and lamp lumen depreciation in pulse start and standard metal halide lamps.

Compared to alternative metal halide systems electronic ballasts can provide equivalent light levels while improving the efficacy of a lighting system by up to 56%. The information in the example compares a lighting system of (100) 400W pulse start lamps operated on an electronic ballast to other metal halide lamp/magnetic ballast systems. An electronic ballast operating a pulse start lamp can reduce total fixture count by 30% and reduce the lighting system wattage consumed by over 50% while maintaining equivalent light levels.



Synergy® Controls

The Synergy lighting control system offers flexible and scalable solutions that satisfy the requirements of both owners and occupants. The Synergy system integrates all aspects of lighting control including low-voltage switching,

architectural dimming, occupancy sensing and daylight harvesting into a single platform. A native BACnet® network allows Synergy to seamlessly integrate with Building Automation Systems (BAS).

Fluorescent

Holophane also offers a full line of high performance, energy efficient options to provide you with the lowest total cost of operation for your lighting system.

Our fluorescent products allow for increased optical control for general area lighting and/or specific task lighting, the elimination of shadows, increased lumen maintenance over the life of the lamp, better color rendition, and more importantly in today's energy-conscious environment, the ability to provide energy savings over the life of the system.

IntelliVue® and IntelliBay®

IntelliVue and IntelliBay high bay fluorescent luminaires feature the Holophane patented P.O.L.A.R. technology that maximizes lumen output when changing ambient temperatures exist. Available with a variety of finishes and options, the IntelliVue and IntelliBay will give you the style, performance, and energy savings one comes to expect from Holophane products.



High Bays (HC)



Integrally Sensored High Bays



IntelliVue and IntelliBay

- CAMPUSES
- ADMINISTRATION BUILDINGS
- COURTHOUSES
- SPORTS
- PARKING LOTS
- WALKWAYS
- WAREHOUSES AND DISTRIBUTION CENTERS
- COMMERCIAL BUILDINGS
- MANUFACTURING PLANTS
- AIRPORT FACILITIES
- PULP AND PAPER MILLS
- PETROCHEMICAL PLANTS
- POSTAL FACILITIES
- SCHOOLS
- ATHLETIC FACILITIES

SiteLink is a new and exciting brand by Holophane that continues the long tradition of winning principles the company has staked its century old reputation on: best in class quality; ease of installation and maintenance; product durability and aesthetic beauty.

SiteLink is a complete site solution, offering the customer more in the way of choices - not just with lighting products but a wide range of complete site options and amenities. SiteLink turns good designs into great designs that fully integrate all of the products found in today's public spaces onto one single structure and allows accommodations for future loading or lighting requirements.

What is SiteLink?

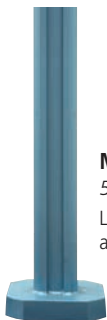
SiteLink is a modular pole available in a variety of shapes and finishes that allows components to easily lock into a revolutionary track system.

SiteLink is compatible with just about any traditional pole accessory and lighting fixture. It is also adaptable so that communication systems, traffic control and security devices, and street amenities may be mounted to the versatile TracLoc System. This is accomplished through a variety of



mounting hardware. The TracLoc System allows an installer to add products in the future without having to modify the pole, buy a new pole, or add components using unsightly straps and banding.

Contemporary Poles



Medium Duty (T2)
5.75" square pole
Light and heavy duty also available

Fluted Series



North Yorkshire
4.5" and 5.25" square fluted post
Other styles available

TracLoc System

At the heart of the TracLoc System is the dovetail track and TracNut.



Contact your local Holophane factory sales representative for additional information on the complete SiteLink Series.

- MUNICIPALITIES
- WATERFRONT DEVELOPMENTS
- CONVENTION CENTERS
- AIRPORTS AND PUBLIC TRANSIT
- COMMERCIAL DEVELOPMENT
- AMUSEMENT PARKS AND RECREATION
- SPORTING VENUES
- SCHOOLS AND UNIVERSITIES
- HOTEL AND RESORT COMPLEXES
- MIXED USE RETAIL



sitelink®
by HOLOPHANE®

- TRACLIGHTS
- TRACARMS
- TRACBASES
- TRACBANNERS
- TRACBOLLARDS
- TRACAMENITIES
- TRACEQUIPMENT

We Can Help You...

- Enhance physical security
- Save energy
- Improve quality of light
- Reduce operations and maintenance costs
- Optimize engineering resources
- Simplify your procurement process

Holophane can provide many services to you at no cost, such as:

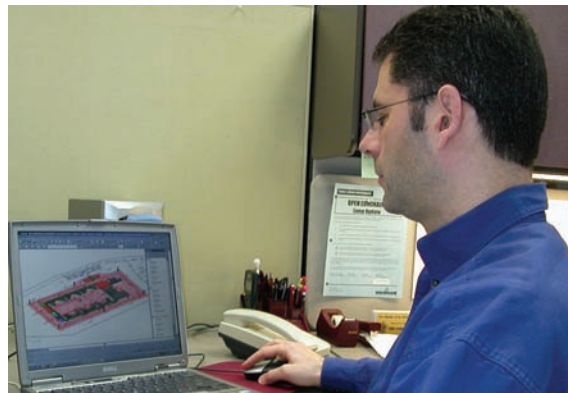
- Lighting design
- Lighting system audits
- Comparative CAD layouts
- Photometric data
- Financial analysis of systems options
- Specification assistance
- Technical support
- Training and lighting seminars

Your Holophane factory representative is your resource for all lighting-related issues. This nation-wide network of lighting experts has the training and experience to meet your security and visibility requirements in the most cost-effective and hassle-free way imaginable.

We Make It Easy!

Holophane luminaires are available through distributors that are familiar with government customers and their unique requirements. You can purchase Holophane products from a national distributor network through a variety of procurement methods:

- Small and minority companies
- Distributor GSA schedules
- DLA prime vendors
- Multiple award schedules
- Purchasing cooperatives
- State and local government contracts
- Government contractors





An **AcuityBrands** Company

Acuity Brands Lighting, Inc.

Holophane Headquarters, 3825 Columbus Road,
Granville, OH 43023

Holophane Canada, Inc. 9040 Leslie Street,
Suite 208, Richmond Hill, ON L4B 3M4

Holophane Europe Limited, Bond Ave.,
Milton Keynes MK11 1JG, England

Holophane, S.A. de C.V., Apartado Postal No. 986,
Naucalpan de Juarez, 53000 Edo. de Mexico

Contact your local Holophane factory sales representative for application assistance, and computer-aided design and cost studies. For information on other Holophane products and systems, call the Inside Sales Service Department at 866-759-1577. In Canada call 905-707-5830 or fax 905-707-5695.

Limited Warranty and Limitation of Liability
Refer to the Holophane limited material warranty and limitation of liability on this product, which are published in the "Terms and Conditions" section of the current buyers guide, and is available from your local Holophane factory sales representative.

Visit our web site at www.holophane.com

Certain airborne contaminants can diminish the integrity of acrylic. Please refer to the Acrylic Environmental Compatibility Chart (HL-2445) for suitable uses.

Luminaires may utilize fluorescent or high intensity discharge sources that contain small amounts of mercury. New disposal labeling for these lamps includes the mercury identifier shown on the left to indicate that the lamp contains mercury and should be disposed of in accordance with local requirements.



Information sources regarding lamp recycling and disposal are included on the packaging of most mercury-containing lamps and also can be located at www.lamprecycle.org.