

3 Bolt Verification Form for Existing Anchorage

Please check all that apply to this job:

3 Existing Anchorage Bolt Pattern

4 Existing Anchorage Bolt Pattern

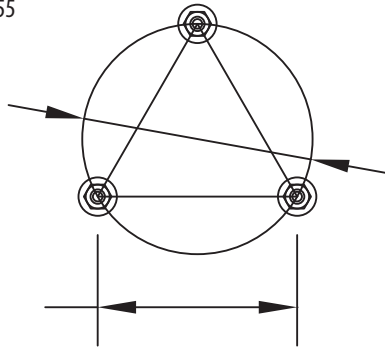
Bolt Circle Diameter

(Measured center bolt to center bolt at 60 degrees) x 1.155

Bolt Circle = _____ inches

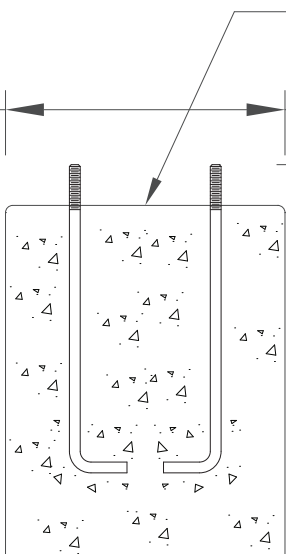
OR

Bolt Triangle = _____ inches



Base Size = _____ inches

Base Shape: (Choose one)
 Round Square



Conduit Size = _____ inches
(Overall outer diameter)

Conduit Location: (Choose one)
 Center Off Center

If off-center, what is the distance from the center of bolt pattern to the center of the Conduit size: _____ inches

Bolt Projection = _____ inches

Notes:

1. Steel and aluminum roadway poles require 2 anchor nuts per bolt.
 - a. Absolute minimum anchor bolt projection for 0.75 inch diameter bolts is 3.25 inches. Consult specific pole template for recommended projection.
 - b. Absolute minimum anchor bolt projection for 1.00 inch diameter bolts is 3.75 inches. Consult specific pole template for recommended projection.
2. Decorative iron and aluminum poles sit directly on the concrete and require 1 anchor nut per bolt.
 - a. Absolute minimum anchor bolt projection for 0.75 inch diameter bolts is 2.00 inches. Consult specific pole template for recommended projection.
 - b. Absolute minimum anchor bolt projection for 1.00 inch diameter bolts is 2.50 inches. Consult specific pole template for recommended projection.
3. Consult Holophane Technical Support Group for assistance.

Job Name: _____

Measured By: _____

Location: _____

Order No.: _____

4 Bolt Verification Form for Existing Anchorage

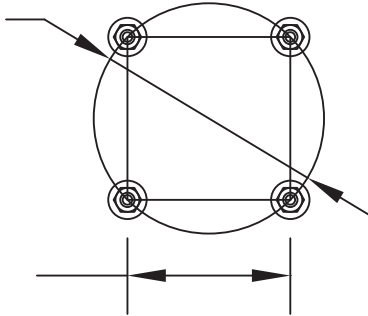
Bolt Circle Diameter

(Measured center bolt to center bolt at 90 degrees) x 1.414

Bolt Circle = _____ inches

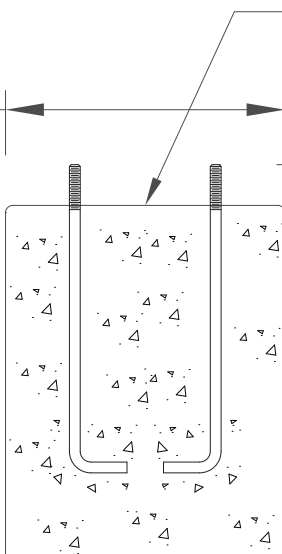
OR

Bolt Square = _____ inches



Base Size = _____ inches

Base Shape: (Choose one)
Round Square



Conduit Size = _____ inches
(Overall outer diameter)

Conduit Location: (Choose one)
Center Off Center

If off-center, what is the distance from the center of bolt pattern to the center of the Conduit size: _____ inches

Bolt Projection = _____ inches

Notes:

1. Steel and aluminum roadway poles require 2 anchor nuts per bolt.
 - a. Absolute minimum anchor bolt projection for 0.75 inch diameter bolts is 3.25 inches. Consult specific pole template for recommended projection.
 - b. Absolute minimum anchor bolt projection for 1.00 inch diameter bolts is 3.75 inches. Consult specific pole template for recommended projection.
2. Decorative iron and aluminum poles sit directly on the concrete and require 1 anchor nut per bolt.
 - a. Absolute minimum anchor bolt projection for 0.75 inch diameter bolts is 2.00 inches. Consult specific pole template for recommended projection.
 - b. Absolute minimum anchor bolt projection for 1.00 inch diameter bolts is 2.50 inches. Consult specific pole template for recommended projection.
3. Consult Holophane Technical Support Group for assistance.

Job Name: _____

Measured By: _____

Location: _____

Order No.: _____