




HOLOPHANE[®]
LEADER IN LIGHTING SOLUTIONS



Holophane[®]
Retail Lighting Solutions

Retail Applications

Grocery

Pharmacy

Sporting Goods

Café

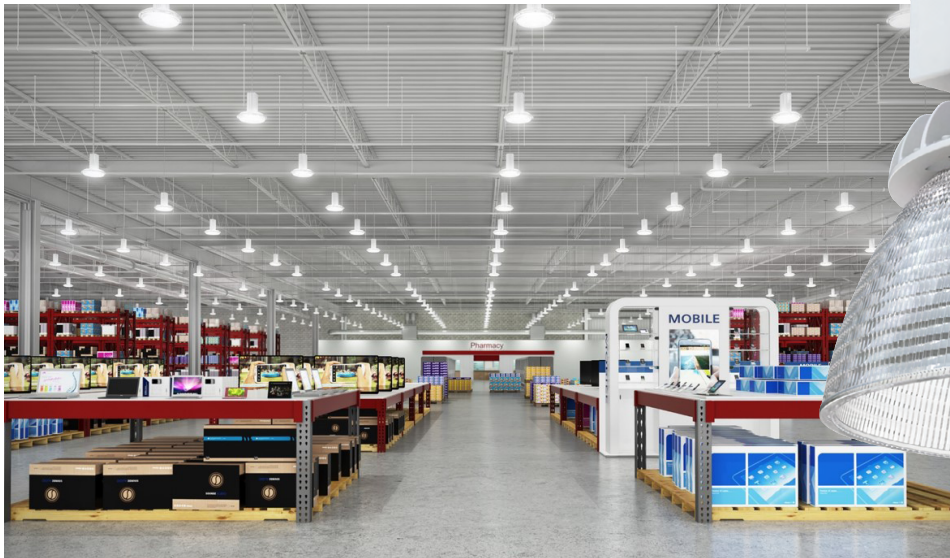
Clothing

Electronics

Big Box Retailer

Lighting for Retail spaces requires continuity, precision, and style

Each application is an opportunity to create a unique blend of colors, temperatures, orientations and controls to make a customer's buying experience comfortable and efficient and Holophane has a solution to make every retail application functional and beautiful.



Phuzion™ PHG LED High Bay:

Eliminate Dark Ceilings with custom optics that deliver up to 12% uplight and help reduce the cave-like effect.

Remote mount option separates driver housing from LED housing to allow for shallow mounting or more aesthetic look.

Aircraft Cable Mounting Option allows for one for one replacement of linear fixtures

Phuzion™ PHS LED High Bay with Uplight:

Intentional uplighting, creates consistent lighting uniformity for an open look and feel you can see.

Remote mount option separates driver housing from LED housing to allow for shallow mounting or more aesthetic look.



Phuzion™ RPHS Remote LED High Bay with Uplight:

Remote mount facilitates shallow mountings by allowing the driver housing to be installed up to 50ft. away.

Borosilicate Glass maintains the highest levels of luminosity over time while resisting impacts. Won't fade or discolor.



Phuzion™ PHZ LED High Bay :

Intricate prismatic design and optional frosted glass optic provides even greater diffusion of light and glare control.

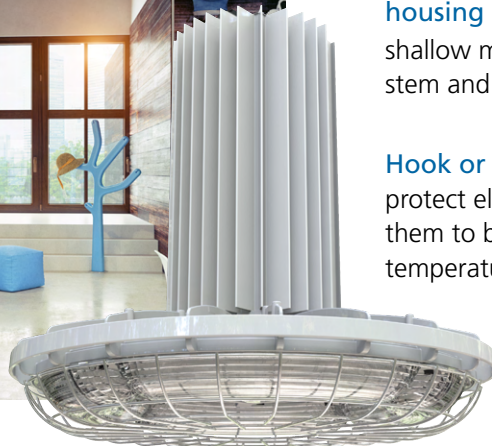
Wireless controls enable lights to be easily configured to respond to one or more priorities from simple on-off commands to more advanced time and/or zone scheduling.



Phuzion™ RPHZ Remote LED High Bay :

Separates driver housing and LED housing (up to 50') to allow for shallow mounting heights as well as, stem and inverted mountings.

Hook or pendant mountings protect electronics by allowing them to be mounted in cooler temperatures than the optics.





LHQM



CZO6L



CZO4L

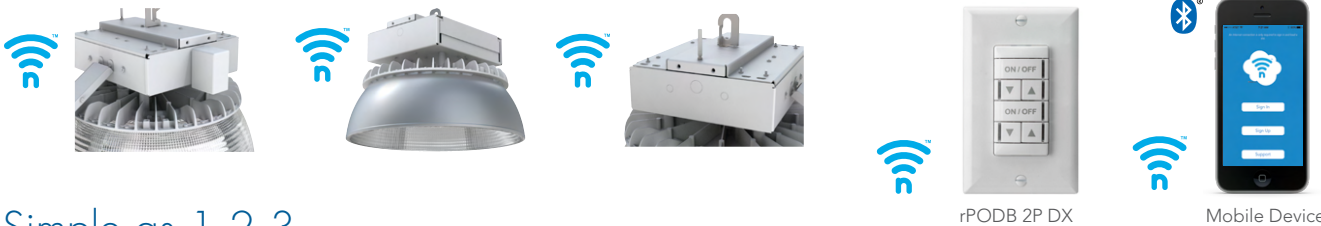


Controls Solutions

nLight® is a sensor-based network digital lighting controls system that offers wired and wireless lighting controls, easily connecting fixtures, sensors, and other control devices to create a digital network. The nLight platform of products enables ease in specification, installation, and ownership, making it the go-to digital lighting controls platform for specifiers, contractors, and building owners.



nLight® AIR wireless lighting controls are a smart solution for simplifying installation and aiding in energy code compliance.



Simple as 1,2,3

1. Install the nLight® AIR fixtures with integrated smart sensor
2. Install the wireless battery-powered wall switch or nLight AIR enabled battery powered ceiling mount sensor
3. With our CLAIRITY™ Pro app, pair the fixtures with the wall switch or remote ceiling mount sensor and if desired, customize the sensor settings for the intended outcome

The Bluetooth® word mark and logos are registered trademarks owned by Bluetooth SIG, Inc. and any use of such marks by Acuity Brands is under license. Other trademarks and trade names are those of their respective owners.

Benefits of nLight® Lighting Controls in Industrial Applications

Savings

Achieve energy and labor savings as well as rebate potential

Easy to Use

The nLight AIR integrated sensor is an occupancy sensor and photocell that works out of the box; use the CLAIRITY™ Pro app to adjust sensor settings

Scalability

Configure the light you need and easily scale from one room to multiple sites with the nLight platform

Aids in Code Compliance

Set light levels in a given space as defined by the specific building code (when entering or leaving a room, as an example)



Warranty Five-year limited warranty. Full warranty terms located at www.acuitybrands.com/CustomerResources/Terms_and_conditions.aspx
Product specifications may change without notice. Please contact your sales representative for the latest product information.