



Lighting Controls Guide

For Outdoor Infrastructure Lighting Solutions



Control Solutions for Outdoor Spaces

For roadway, security, large sites and area lighting, leverage lighting controls to deliver the optimal level of illumination in outdoor infrastructure areas.

Acuity Brands Lighting offers a well-rounded portfolio of luminaires, LED drivers for dimming and connectivity to controls and sensors to enable a multitude of outdoor infrastructure lighting applications. The entire solution is available with standalone, local wireless and fully networked systems to Smart City platforms powered by our D4i certified drivers allowing for digital asset management, metering and diagnostics.

Simplify design and installation by selecting luminaires available with embedded controls; designed, manufactured, tested, and shipped with factory-installed sensors or controls devices.

Discover your outdoor lighting solutions...



Standalone Controls for Roadway, Security and Large Sites

Basic dusk-to-dawn switching with optional field adjustable output



DBL Standalone Embedded Button Photocontrol

LED long-life button style controls designed to be installed with lighting that does not use a NEMA receptacle.



DP Standalone Field Installable Photocontrol

Utilizes premium components and silicon light sensors HID luminaires which resist long term drift of the turn-on level.



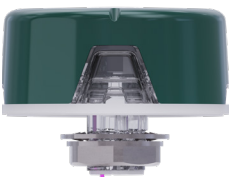
DLL Standalone Field Installable Photocontrols

Long-life LED photocontrol with TRIAC assisted relay for inrush and superior surge protection the DLL Elite supports extended life and low maintenance benefits associated with LED fixtures.



DZP Standalone Field Installable Photocontrols

Standard DC Low Voltage Zhaga twist lock photocontrols are LED long-life Zhaga D4i low voltage DC controls available with optional integral factory or field adjustable dimming control.



DEP Standalone Embedded Photocontrols

LED long-life luminaire embedded low voltage DC controls available with optional integral factory or field adjustable dimming control.

Local Wireless Controls for Roadway Security and Large Sites

Secure Local Wireless Controls with Full Lifecycle Management



DTL DCC & DCR Local Wireless Field Installable AC Photocontrol with Remote Control

The DTL Connect Series photocontrol and remote allows the user to enable and disable the photocontrol from the ground. This solution is ideal for difficult-to-access areas and security lights.



DTL DELC Local Wireless Embedded DC Photocontrol with Local Connect

Embedded low voltage control with wireless Bluetooth® connectivity to Local Connect™ cloud based software.

The Bluetooth® word mark and logos are registered trademarks owned by Bluetooth SIG, Inc. and any use of such marks by Acuity Brands Lighting is under license.

Local Connect™ Local Wireless Lighting Control

Secure local wireless control with full lifecycle management via web portal and mobile application for outdoor lighting. Local Connect provides powerful features including clock-based 24-hour lighting control profiles, diagnostics and lifecycle management of lighting assets. Conveniently operate and diagnose streetlights and security lights from the ground.

Solution Components		
DTL DELC	Local Connect Mobile App	Local Connect Web Portal
Embedded low voltage photocontrol, powered by Bluetooth® to enable lifecycle and asset management via a mobile app and web portal.	Mobile app with optimized field workflows for installation, operations and maintenance.	Web portal with modules optimized for outdoor lighting project and operations management.
Luminaire Configuration: Hardware Options		
DTL DELC with No receptacle	DTL DELC with NEMA receptacle	DTL DELC
Ideal for customers who want a clean look and not looking for future upgrade paths.	Ideal for customers who want to start with the features and benefits of Local Connect but might want to upgrade to a fully networked system using a NEMA or Zhaga Networked Lighting Control.	

Note: The NEMA ANSI C136.41 receptacle needs to be ordered with a DTL DSHORT CAP and the Zhaga Book 18 Z-LEX-R receptacle needs to be ordered with a Z-LEX-C (Luminaire Extension Cap) for operation and weatherproofing until future upgrade.

Networked Lighting Control

Mesh Networked Lighting Controls Connecting to Itron

Secure multi-application platform, providing one network for critical infrastructure solutions like smart lighting, smart metering and other outdoor IoT technologies.

Solution Components



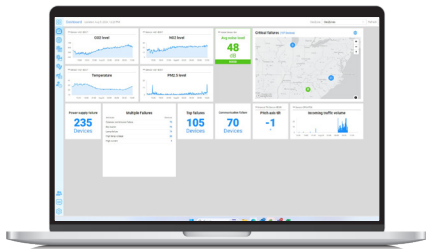
DTL DIN Field Installable Networked Lighting Control (NLC)

The DIN networked photocontrol combines the reliability of a 20-year operating life LED photocontrol with the performance of Itron® network platform for unparalleled functionality and adaptive control of street lighting systems.



Itron Mesh Devices and Network

Itron mesh devices include the Network Interface Card inside the NLCs and Micro Access Points which are hybrid devices which act as an Access Points and NLCs.



Itron CityEdge CMS and CityEdge:Go Installation App

Itron CityEdge Central Management System is a customizable multi-device support Central Management system built for Networked Lighting Controllers and Smart City devices.



Accessory:

The DTL EPM (Energized Pole Monitor) is a luminaire integrated sensor which detects if metal streetlight poles are energized due to stray voltage, aging infrastructure and/or wiring issues.

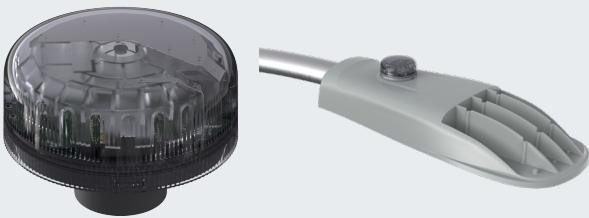
Note: Itron CityEdge CMS + Mesh Network Connectivity as SaaS can be purchased via Acuity

Cell Connect™ Networked Lighting Control & D4i Solution

Cellular Networked Lighting Connecting to Ubiqquia

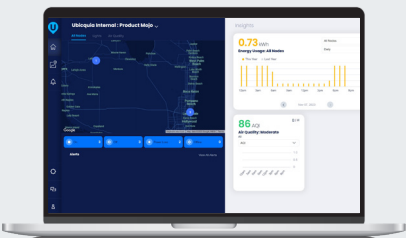
This complete solution features luminaires designed for outdoor infrastructure that leverage the D4i™ certified driver capabilities, and communicates over cellular to UbiVu®, cloud-based asset management system, by Ubiqquia®.

Solution Components



Cell Connect™ Embedded Networked Lighting Control (NLC)

Photocontrol leverages the D4i™ certified driver capabilities, and communicates over cellular to UbiVu®, cloud-based asset management system, by Ubiqquia®.



UbiVu Cloud-based platform by Ubiqquia®

The cloud-based UbiVu platform provides data and analytics to identify and address energy waste, equipment outages, hazardous air quality, and capacity overloads. UbiVu has customizable interfaces and remote troubleshooting, to help asset managers make decisions that improve operational performance.

Low Voltage D4i certified drivers by eldoLED®

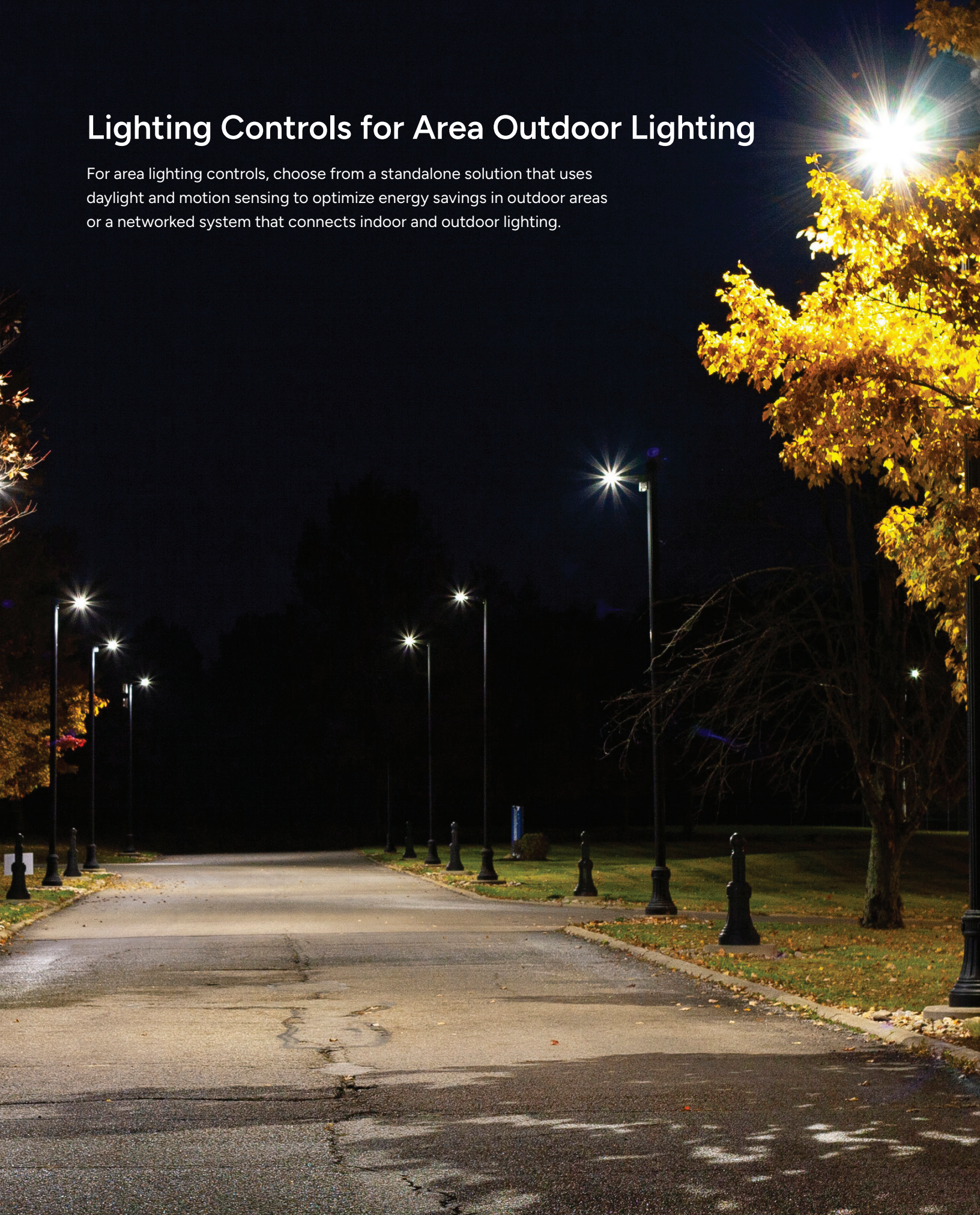
Cell Connect NLCs are embedded within Acuity Brands luminaires with D4i certified drivers, by eldoLED® that provides digital dimming and standardized smart-data capabilities including asset management, diagnostics and maintenance, and energy metering. Integrated DALI bus power supply and auxiliary outputs supporting 24VDC, delivering integrated digital functionality and simplified design, enabling wired and wireless networked lighting controls capabilities.

To connect to a different third party platform that utilizes D4i capabilities, Acuity Brands luminaires are available with D4i certified drivers and Zhaga receptacles for connection to other controls, such as the UbiCell UGU from Ubiqquia.

Note: Ubiqquia UbiVu CMS SaaS + Cellular Network Connectivity as SaaS must be purchased directly from Ubiqquia

Lighting Controls for Area Outdoor Lighting

For area lighting controls, choose from a standalone solution that uses daylight and motion sensing to optimize energy savings in outdoor areas or a networked system that connects indoor and outdoor lighting.



Standalone Lighting Controls

Standalone lighting controls from SensorSwitch™ offer an out-of-the-box, effective way to manage outdoor lighting. Ideal for applications like parking lots, walkways, and building perimeters, SensorSwitch™ outdoor motion sensors use Passive Infrared (PIR) technology to automatically adjust the light, from on/off to high/low dimming.



SBOR Outdoor Pole/Fixture Mount Photocell Sensor

Line voltage sensor with motion detection and power switching, ideal for standalone control in outdoor pole or fixture-mounted applications.



SBO Outdoor Pole/Fixture Mount Motion Sensor

Low voltage sensor with motion detection, designed to work with a power pack for control in outdoor pole or fixture-mounted applications.

Networked Lighting Controls

Networked lighting controls from nLight® offers energy savings and operational efficiencies for outdoor lighting. The area lighting controls offer light and motion sensor, real-time sequence of operations with field installable and embedded options



rTLN Twist-to-Lock Node

NEMA twist-to-lock node for wireless nLight AIR, providing an easy-to-install networked control device for outdoor luminaires.



rSDGR Outdoor Embedded Sensor

Outdoor rated sensor incorporates Passive Infrared (PIR) technology into a low voltage motion sensor.



rSBOR Outdoor Pole and Fixture Mount Sensor

Outdoor rated sensor incorporates Passive Infrared (PIR) technology into a low voltage motion sensor.

Leading Brands in Lighting Control



DTL® Dark to Light – Trusted Name in Outdoor Controls

DTL Dark to Light has a storied history of innovation, providing exceptionally reliable, long-life photocontrols. For energy efficient roadway, area lighting, floodlights, security and residential streetlights, DTL offers a broad portfolio of products including AC or DC based standalone controls, local wireless control solutions. DTL also connects lighting to smart infrastructure solutions.



nLight® – Your site. One system.

Your one, wired and wireless networked lighting controls system, for indoor and outdoor applications. Scaling from room to campus-wide applications, nLight is the one, connected system that adapts to your needs and site, today and tomorrow. Seamlessly address code requirements, gain energy and operational efficiencies, and sustain space enhancements and occupant comfort.



SensorSwitch™ – Performance You Can Count On

The standalone lighting controls designed for indoor room-based, industrial or outdoor spaces. Easily find wired or wireless products designed with proven technology, providing out-of-the-box operation to address rebate programs and simple code requirements for new construction and retrofit projects.




LED Drivers





eldoLED®

Driver technology is the heart of lighting and the core of what we do. We create LED drivers, light engines and modules to empower the performance, quality and connectivity of your indoor, outdoor and industrial lighting solutions.

Roadway, Security, Large Sites

Standalone		Local Wireless		Networked	
Basic dusk-to-dawn switching with optional field adjustable output		Secure Local Wireless Controls with full Lifecycle Management		Fully Networked Lighting Controls with for Smart Cities	
AC	DC	AC	DC	AC	DC
					
DP, DLL, DBL		DCC + DCR		DTL DIN Connecting Lighting to Itron City Edge	
DEP, DZP		DTL Local Connect DELIC + Mobile App + Web Portal		Cell Connect Connecting to UbiVu by Ubiqia®	

Area Lighting

Standalone Motion Sensors with optional Controls	Networked Local Wireless
Standalone all-in-one control + motion sensor or low voltage motion sensor input to Networked Lighting Controls	Area lighting controls with light and motion sensor, real-time sequence of operations with field installable, embedded and pole mount options.
AC	AC
	
SBOR	rTLN, rSDGR, rSBOR + Eclipse™ Gateway + Visual Software

Holophane / AEL Infrastructure Outdoor Product Controls Matrix

Brand	Series	LED DRIVER	RECEPTACLES		EMBEDDED LIGHTING CONTROL OPTIONS				
		DALI® D4i Option	NEMA P7	Zhaga	DC Connect	Local Connect	Cell Connect	nLight®	FAO Module
Cobra Head									
AEL	ACC 	✓	✓	✓	✓	✓	✓	✓	✓
	ACM 	✓	✓	✓	✓	✓	✓	✓	✓
	ACL 	✓	✓	✓	✓	✓	✓	✓	✓
Area & Offset Roadway									
HOLOPHANE	MGLEDM 	✓	✓	✓	✓	✓	✓	✓	✓
Security									
AEL	WLT 	✓	✓	✓	✓	✓	✓	✓	
Wallpack & Canopy									
HOLOPHANE	WCNG/WCNP 	✓	✓	✓	✓	✓	✓	✓	✓
Flood Lights									
HOLOPHANE	PSLED 	✓	✓	✓	✓	✓	✓	✓	✓
	PMLED 	✓	✓	✓	✓	✓	✓	✓	✓
	PLLED 	✓	✓	✓	✓	✓	✓	✓	✓
AEL	75LED 	✓	✓	✓	✓	✓	✓	✓	✓
	ACP0 	✓	✓	✓	✓	✓	✓	✓	✓
	ACP1 	✓	✓	✓	✓	✓	✓	✓	✓
	ACP2 	✓	✓	✓	✓	✓	✓	✓	✓



Contact your sales representative for available for special control combination configurations.

Brand	Series	LED DRIVER	RECEPTACLES		EMBEDDED LIGHTING CONTROL OPTIONS				
		DALI® D4i Option	NEMA P7	Zhaga	DC Connect	Local Connect	Cell Connect	nLight®	FAO Module
Utility Lanterns									
AEL	245L 	✓	✓	✓	✓	✓	✓	✓	✓
	247L 	✓	✓	✓	✓	✓	✓	✓	✓
	247CL 	✓	✓	✓	✓	✓	✓	✓	✓
	ARDL 	✓	✓	✓	✓	✓	✓	✓	✓
	ARDCL 	✓	✓	✓	✓	✓	✓	✓	✓
	AVPL2 	✓	✓	✓	✓	✓	✓	✓	✓
	AVPCL2 	✓	✓	✓	✓	✓	✓	✓	✓
Decorative Lanterns									
HOLOPHANE	ARE3/ARUE3 	✓	✓	✓	✓	✓	✓	✓	✓
	PTE3/PTUE3 	✓	✓	✓	✓	✓	✓	✓	✓
	JFE3/JFUE3 	✓	✓	✓	✓	✓	✓	✓	✓
	AUCL3 	✓	✓	✓	✓	✓	✓	✓	✓
	PUCL3 	✓	✓	✓	✓	✓	✓	✓	✓
	WFCL3 	✓	✓	✓	✓	✓	✓	✓	✓
Post-Top Acorns, Spheres & Gas Lamps									
HOLOPHANE	GVD3/GPD3 	✓	✓	✓	✓	✓	✓	✓	✓
	AWDE3 	✓	✓	✓	✓	✓	✓	✓	✓
	WAE3 	✓	✓	✓	✓	✓	✓	✓	✓
	PSUE3 	✓	✓	✓	✓	✓	✓	✓	✓
	RFUE3 	✓	✓	✓	✓	✓	✓	✓	✓



Outdoor Luminaires



Holophane® provides industry-leading lighting products and solutions, giving customers the greatest value through improved visibility, energy efficiency, reliability, quality and service.



American Electric Lighting® products include luminaires for roadway, industrial, commercial, area lighting, security, flood, and decorative. Key customers include utilities, municipalities, contractors, industrial manufacturers, governments, and engineers.



Cyclone® designs, develops, and manufactures deco-functional outdoor luminaires by focusing on photometric performance, sturdy construction, tool-free maintenance and a wide range of luminaire styles.



For more information please visit us at:
www.acuitybrands.com