



LIGHTING SOLUTIONS FOR PETROCHEM APPLICATIONS

EXCEPTIONAL PRODUCTS, SERVICES, AND TECHNOLOGY TO HELP DIFFERENTIATE YOUR PETROCHEMICAL FACILITY

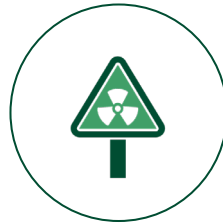
In petrochemical applications where distillation, polymerization, fertilizer production and other important processes are a part of daily operations, durable and quality lighting is crucial. Task and production areas require precise vertical illumination from luminaires capable of performing in demanding and hazardous environments with minimal maintenance. Paired with controls capabilities, a complete LED lighting solution can reduce maintenance costs by up to 40%.

FIND RECOMMENDED LIGHTING SOLUTIONS FOR PETROCHEM APPLICATIONS

Lighting and controls solutions tailored to your facility, combined with the information you need to complete your project. Get spec sheets, BIM and IES files, utility rebate calculations and more.



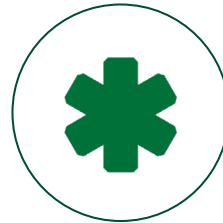
Control Room



Hazardous



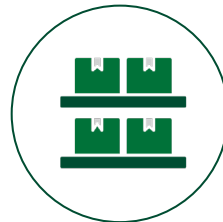
Indoor Storage



Life Safety



Outdoor Area



Outdoor Storage



SPOTLIGHT ON: LIGHTING AND CONTROLS TAILORED TO PETROCHEMICAL FACILITIES



C1D1 Hazardous Portfolio

Designed for hazardous environments, the C1D1 portfolio from Holophane is ideal for environments where explosive and flammable gas, liquids, or vapors are present in normal operating conditions.



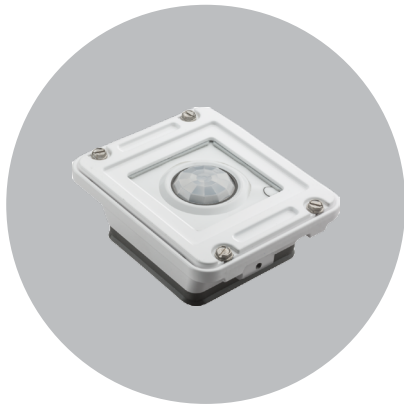
Petrolux® Low & High Bay Lights

The Petrolux family is designed to perform where dust, dirt, moisture and more are a concern. With hazardous ratings to meet the needs of your challenging environment, 10KV surge protection, durable optics, and more, choose Petrolux for your bay lighting.



HMAO™ LED IV High Mast

The 4th generation HMAO provides long system life and up to 65% energy reduction over traditional 400-1000+W HID products. The HMAO is available with multiple lumen packages, integrated controls options, both roadway and area optical distributions, and more.



nLight®

nLight wired and wireless networked lighting controls are easily specified, installed and scaled to grow with your building, perimeter, and site applications. Indoor and outdoor spaces can be controlled seamlessly while both saving energy and meeting code requirements.





SEE WHAT LIGHTING CAN DO FOR YOUR PETROCHEMICAL FACILITY

