



LIGHTING SOLUTIONS FOR TRANSPORTATION SYSTEMS

EXCEPTIONAL PRODUCTS, SERVICES, AND TECHNOLOGY TO HELP DIFFERENTIATE YOUR TRANSPORTATION SYSTEMS

Lighting for transportation system applications such as rail yards, subway tunnels, and parking lots require uniform illumination, high energy efficiency, low maintenance, and durability. Our lighting solutions offer advanced optics and controls, ensuring optimal lighting quality and reduced energy consumption while minimizing maintenance costs.

FIND RECOMMENDED LIGHTING SOLUTIONS FOR TRANSPORTATION SYSTEM APPLICATIONS

Lighting and controls solutions tailored to your facility, combined with the information you need to complete your project. Get spec sheets, BIM and IES files, utility rebate calculations and more.

INDOOR



Underground Stations



Bus and Railcar Maintenance



Subway Tunnels

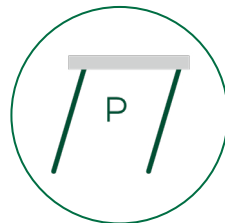


Parking Garage

OUTDOOR



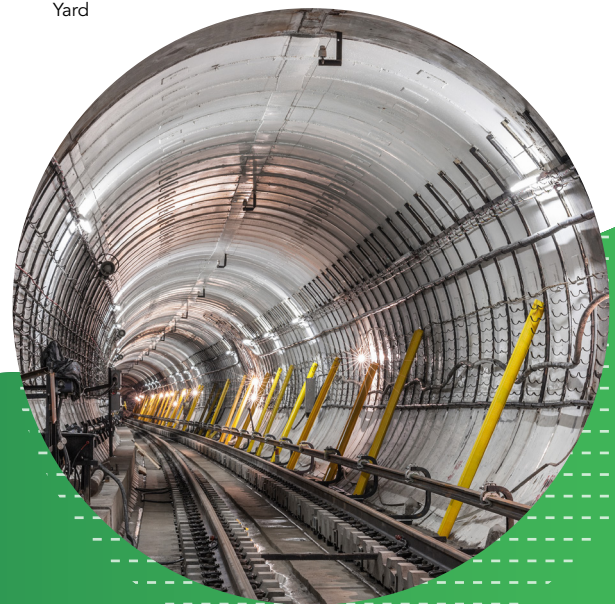
Surface Stations and Platforms



Parking Lot



Yard

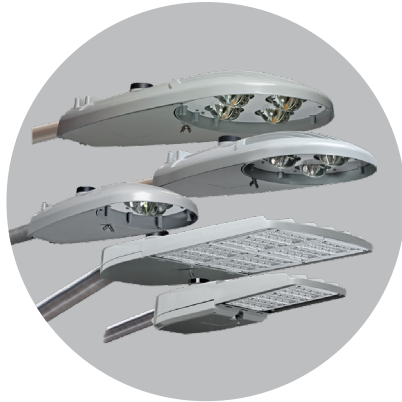


SPOTLIGHT ON: LIGHTING AND CONTROLS TAILORED TO TRANSPORTATION APPLICATIONS



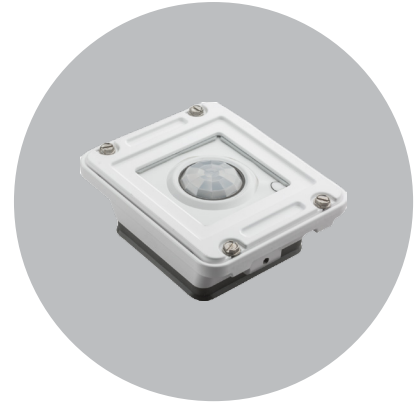
Cyclone™ Outdoor Luminaires

Discover contemporary, superior-quality outdoor luminaires designed for street and roadway applications from Cyclone that focus on photometric performance, sturdy construction, and tool-free maintenance in a wide range of luminaire styles to complete your project.



AEL Autobahn Luminaires

The AEL Autobahn family of roadway luminaires offer exceptional performance, energy efficiency, and durability, featuring precision optics that provide uniform distribution to reduce glare and improve visibility. Autobahn includes multiple mounting options and lumen packages to meet the



nLight®

nLight wired and wireless networked lighting controls are easily specified, installed and scaled to grow with your building, perimeter, and site applications. Indoor and outdoor spaces can be controlled seamlessly while both saving energy and meeting code requirements.





SEE WHAT LIGHTING CAN DO FOR YOUR TRANSPORTATION SYSTEM APPLICATIONS

